

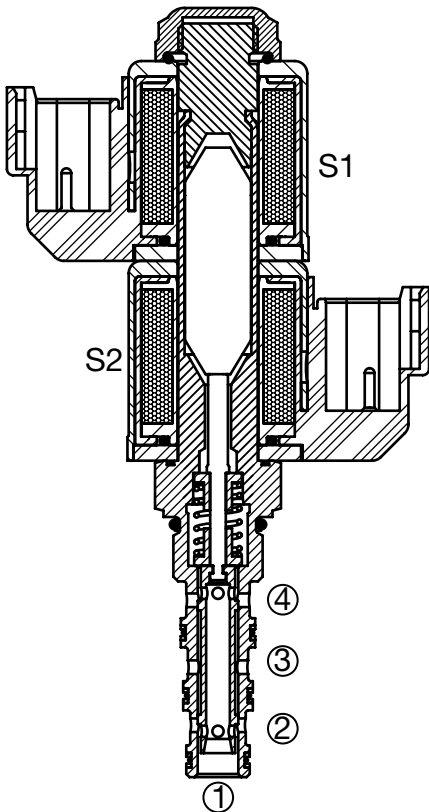
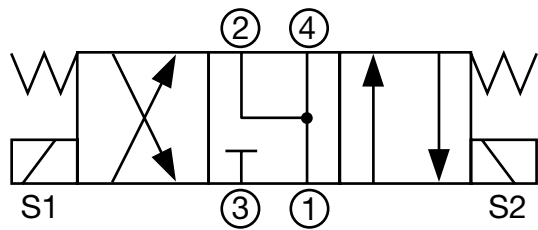
SOLENOID VALVES

WK06J-01

Spool Type, Direct Acting

Up to 3 gpm (11.4 l/min) • 5000 psi (350 bar)

Hydraulic Symbol



Description

A screw-in cartridge, solenoid operated, 4-way, 3 position, direct acting, spool type valve.

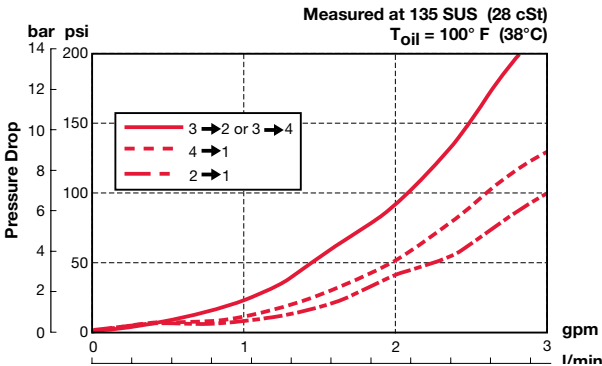
Operation

When de-energized the WK06J allows flow from cylinder ports 2 and 4 to port 1, port 3 is blocked. When coil S1 is energized the spool shifts and allows flow from port 2 to port 3 and from port 4 to port 1. When coil S2 is energized the spool shifts and allows flow from port 3 to port 1 and from port 4 to port 2.

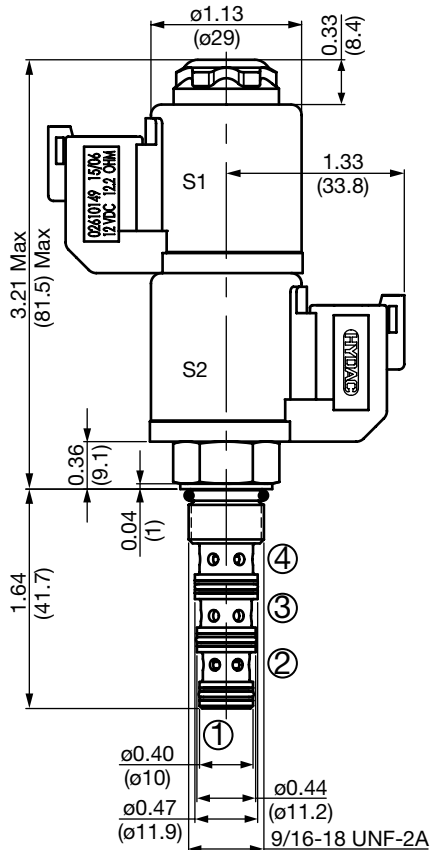
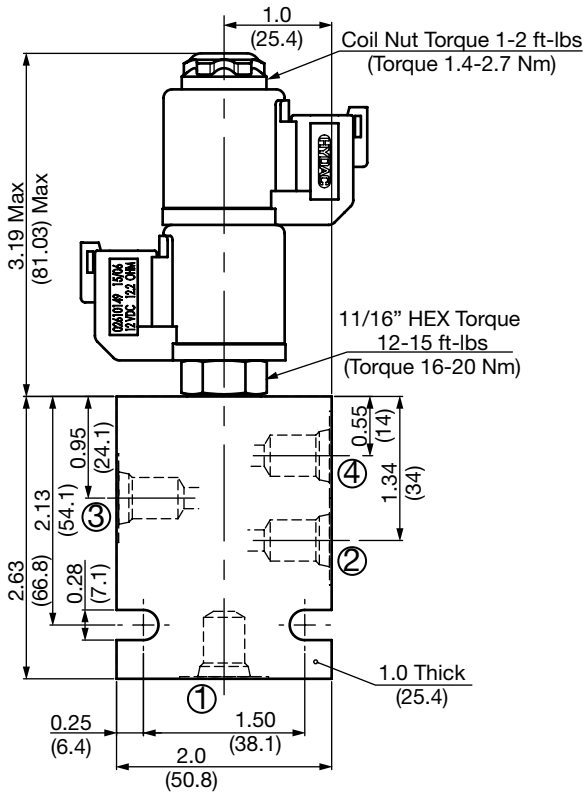
Specifications

Operating Pressure	5000 psi (350 bar), 3000 psi (210 bar) Max Port 1
Nominal Flow	See Operating Limits
Internal Leakage	11.6 cu in/min. at 3000 psi and 158 SUS (190 cc/min at 250 bar and 34 cSt)
Fluid Operating Temp. Range	-20° to 248°F (-29° to 120° C)
Ambient Temperature Range	-20° to +140°F (-29° to +60°C)
Coil Duty Rating	Continuous from 85% to 115% of nominal voltage
Current Draw at 68°F (20°C)	984 mA at 12VDC; 492 mA at 24VDC
Min. Pull-in Current to Operate Valve	70% of nominal amperage
Fluid Compatibility	Mineral-Based or Synthetics with lubricating properties
Viscosity	50 to 2000 SUS (7.4 to 420 cSt)
Filtration	21/19/16 or cleaner per (ISO 4406)
Installation	No orientation restrictions
Cavity	FC06-4 (see Line Bodies & Cavities section)
Cavity Tools	Rougher: 02582057 Finisher: 02582058
Cartridge Weight	3.6 oz (102 grams)
Coil Weight	3.1 oz (88 grams) each (2 required)
Cartridge Material	Steel with hardened work surfaces. Zinc plated exposed surfaces. Buna N or Viton® o-rings. Solid thermoplastic polyester back-up rings.
Coil Material	Class N, 200°C high temperature magnet wire, steel shell, polyester encapsulation.
Seal Kits	Buna-N FS064-N P/N: 02610188 Viton® FS064-V P/N: 02610189

Performance



Dimensions



All measurements in inches (mm).
Subject to technical modifications

Model Code

WK06J-01 M-C-N-24 DN

Valve Model

Override Option

- blank = No manual override
- M = Manual override, not detented
- A = Manual override, detented

Body & Ports

- C = Cartridge only
- AS4 = SAE-4 Ports, aluminum body
- SS4 = SAE-4 Ports, steel body

Seals

- N = Buna-N
- V = Viton®

Coil Voltage

- 0 = No coil, cartridge only
- DC 12 = 12 VDC
- DC 24 = 24 VDC
- AC 115 = 105 VDC (only available with connector DG)
- AC 230 = 205 VDC (only available with connector DG)

(All model 32-1329 coils are DC. AC models require an external diode bridge mounted outside the coil)**

Coil Connector

- DG = EN 175301-803-B (IP65 Rated)**
- DC DL = Leadwires (2) - 18" long (46 cm) AWG18, TYPE UL 1815 (IP69K Rated)*
- DN = Deutsch DT04-2P integral molded (IP69K Rated)*

Use mating plug EN 175301-803-B without diode bridge for DC voltages P/N 02600570

Use mating plug EN 175301-803-B w/diode bridge for AC voltages P/N 02600582

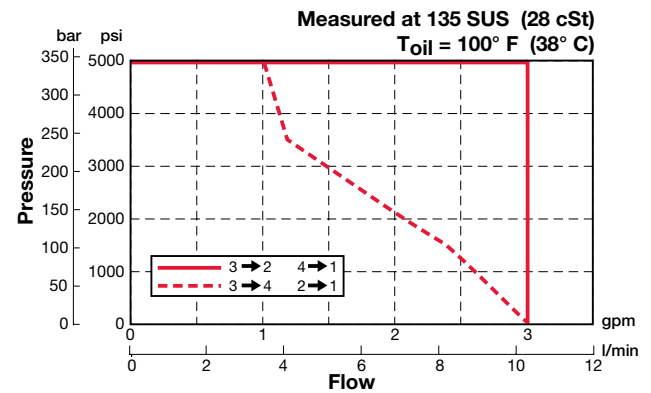
Coil Model 32-1329

For other coil connector types consult factory

** Mating Plugs sold separately

*Coils with internal transient suppression diode are available, consult factory.

Operating Limits



Standard Line Bodies*

Code	Part No	Material	Pressure Rating	Weight
FH064-AS4	02600462	Aluminum, anodized	3500 psi (245 bar)	0.41 lbs (0.19 kg)
FH064-SS4	02600461	Steel, zinc plated	6000 psi (420 bar)	1.22 lbs (0.55 kg)

*Please refer to Line Bodies & Cavities section for details